

Sandscape Texture™ by **Bomanite**®

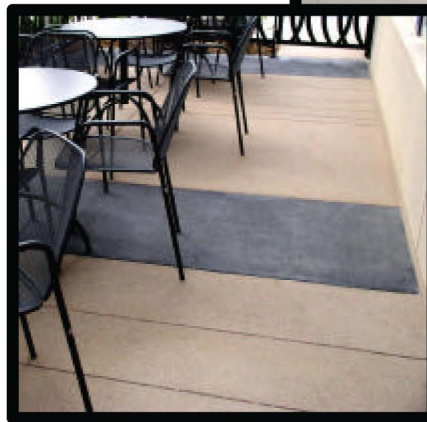
Sandscape Texture™ is a cast-in-place concrete finish with dozens of color options.

The hallmark of this finish is its texture, consistent color and crisp, clean look.

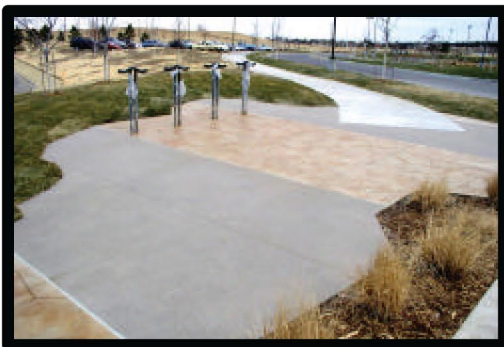


Patios

This city center uses Sandscape Texture finished paving and special “V” saw-cuts and black banding to accomplish a clean modern look.



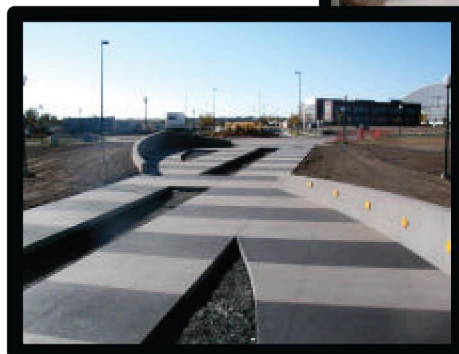
Plazas

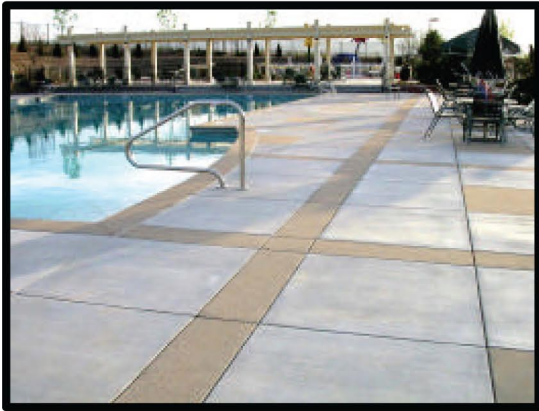


The hospital above alternates Sandscape Texture with Bomanite imprinted concrete.



The plaza pictured above and left uses Sandscape Texture paving with stained bands and seat walls.

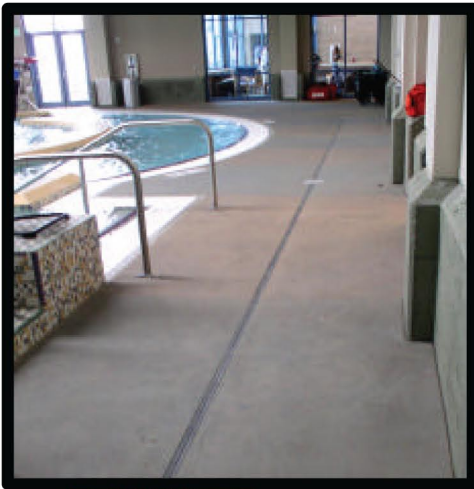




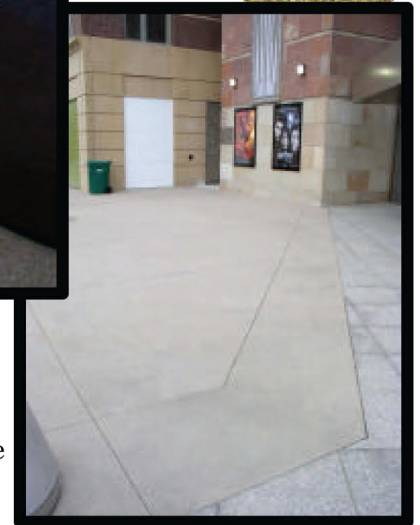
Pool Decks

The above pool deck is all uncolored concrete with Sandscape Texture bands that take on a different hue due to the finish.

At right, a pool deck with a Sandscape Texture also has areas stained in a pale green to match the walls.

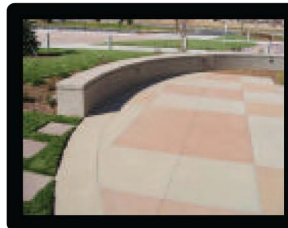


Side - walks

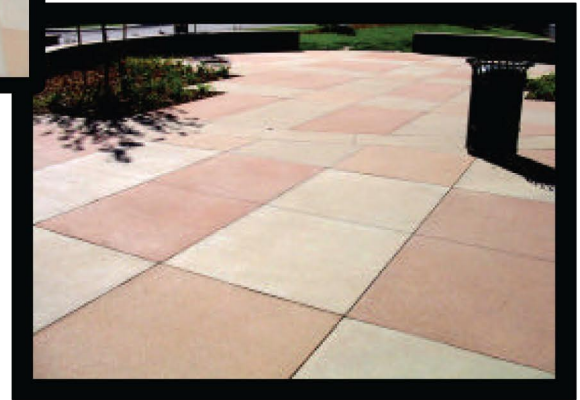


These sidewalks (above and right) are warmed by the Sandscape Texture Finish. "V" cuts accentuate the architecture (right).

Seat Walls



Several colors of Sandscape Texture and a seat wall (above) highlight this courtyard.



Customize it!

- Standard and Premium Finishes
- Dozens of Color Options
- Special Aggregates
- White Cement Available
- Vertical Application for walls

Bomanite International Limited
 email: inquiry@bomanite.net
www.bomaniteinternational.com

©2011 **Bomanite International Limited**
 Bomanite® is a registered trademark and service mark with the U.S. Patent Office and other countries.
 Exposed System - Sandscape Texture